



KEMPPI

Flexlite TX

Product Training Material

Content

- ABOUT THE PRODUCT

- Introduction
- Key benefits
- Model designation
- Gas-cooled versions
- Water-cooled versions
- Torch body compatibility
- Trigger switch options
- Remote control options
- Consumables
- Applications
- Applications – Case example

- ADDITIONAL DETAILS

- Technical data
- Ordering information
- Contact information



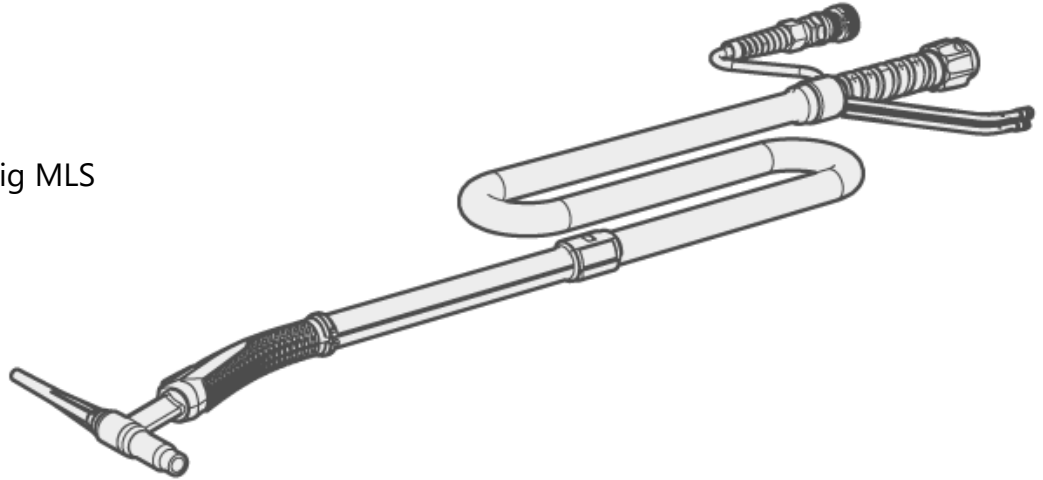


About the product

The next slides explain the product, its components and applications.

Introduction

- 130...220 A gas-cooled versions (G)
- 250...350 A water-cooled versions (W)
- 4, 8 and 16 m version
- 7-pin connector
 - Same connection as in TTC
 - Can be used also with old MasterTig MLS
- Remote control options



Key benefits



EXCELLENT ERGONOMICS

- Unique and innovative handle flexibility
- Moving the moment of load away from the welder's wrist
- Reducing apparent weight and lowering fatigue



USABILITY

- Compact neck designs include rigid, flexible and S-shaped rotating neck designs
- Superb cooling performance
- Good access to challenging joint designs

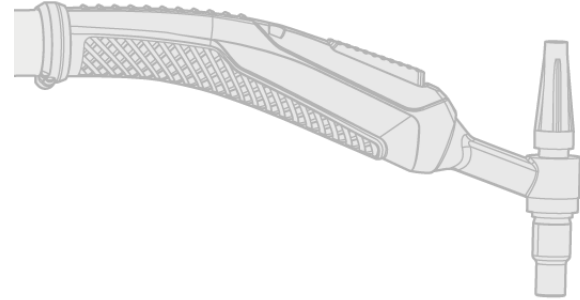


QUALITY

- Kemppi consumables and accessories support both welding quality and productivity



Model designation



Model series
name

Load capacity
@ 40% (Argon)

Kemppi value level:
3, 5, 7 or 8

Cooling type:
Gas or Water

Tech features:
S = S neck
F = Flexible neck
N = No switch

TX

160 A = 16

5

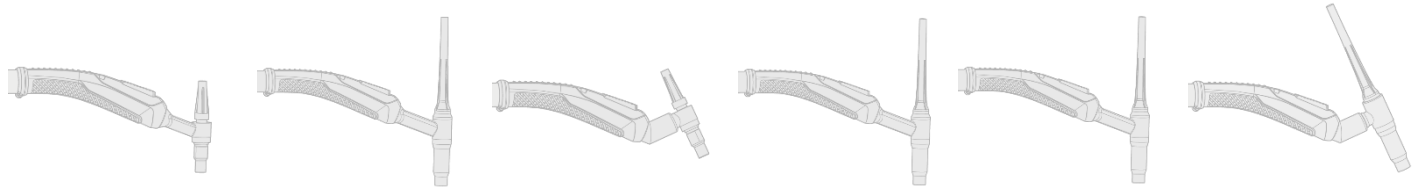
G

FN

FlexliteTX165GFN



Gas-cooled versions



	TX 135GF	TX 165GF	TX 165GS	TX 165G	TX 225G	TX 225GS
DC 40% ED [A]	130	160	160	160	220	220
AC 40% ED [A]	100	100	110	120	160	120
Electrode diameter [mm]	1.0...2.4	1.0...4.0	1.0...2.4	1.0...4.0	1.0...4.0	1.0...4.0
Torch head type	Small	Large	Small	Large	Large	Large
Neck type	Flexible	Flexible	S neck	70° angle	70° angle	S neck




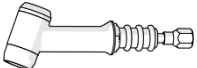

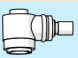
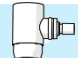
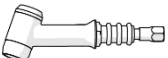
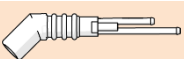
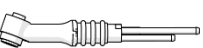
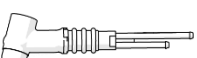
Water-cooled versions



	TX 255WS	TX 305WF	TX 355W
DC 40% ED [A]	250	300	350
DC 100% ED [A]	200	200	250
AC 40% ED [A]	250	250	300
AC 100% ED [A]	140	140	200
Electrode diameter [mm]	1.0...2.4	1.0...2.4	1.0...4.0
Torch head type	Small	Small	Large
Neck type	S neck	Flexible	70° angle



Torch body compatibility

		TX135GF	TX165GF	TX165GS	TX165G/ TX225G	TX225GS	TX255WS	TX305WF	TX355W
SP013377		●	○	○	○	○			
SP013386		○	●	○	○	○			
SP013394		○	○	●	○	●			
SP801064		○	○	●	○	○	●	○	○
SP013404		○	○	○	○	●	○	○	○
SP013362		○	○	○	●	○			
SP014575							●	○	○
SP014126							○	●	○
SP013423							○	○	●

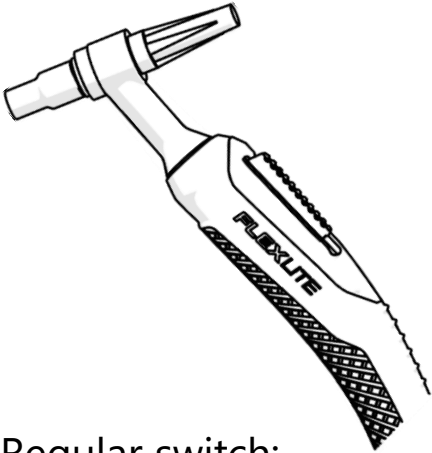
SP014575 and SP013394 requires always SP801064 or SP013404

SP801064 and SP013404 cannot be used separately

● Standard delivery
○ Accessory

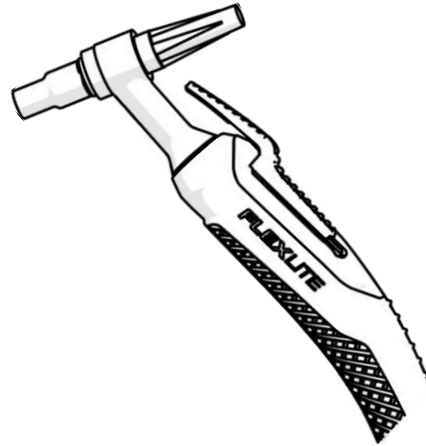


Trigger switch options



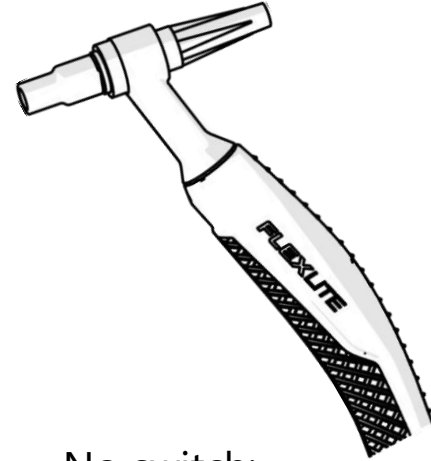
Regular switch:

- Standard delivery
- Can be used with all models



Switch extension:

- Included in standard delivery on all other models except S neck
- Cannot be used with S neck



No switch:

- Can be used with limited models (N)
- Welding is started from the foot pedal



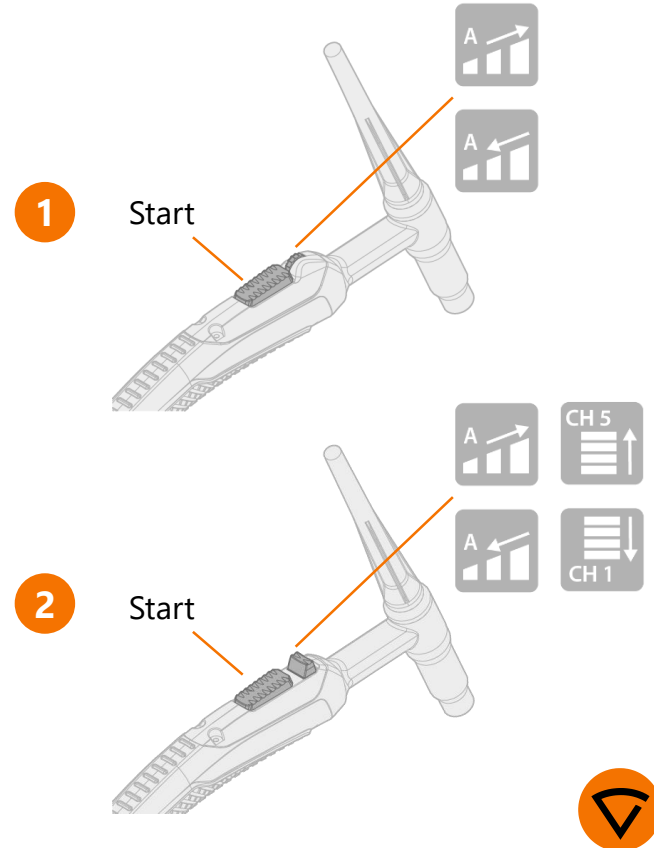
Remote control options

1. Flexlite TXR10 remote, roller switch

- Current adjustment by rolling
- TXR10W model for water-cooled torch
- TXR10G model for gas-cooled torch

2. Flexlite TXR20 remote, rocker switch

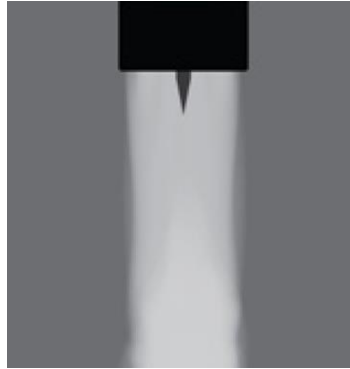
- Current or memory channel adjustment by pulling/pushing
- TXR20W model for water-cooled torch
- TXR20G model for gas-cooled torch



Consumables

- The consumable parts that are used in a welding torch have a great influence on the quality and profitability of welding.
- Kemppi offers consumables and accessories that are especially suited to fit Flexlite torches.

Laminar gas flow



A torch fitted with a **Kemppi gas lens kit**, creating a smooth laminar gas flow, excellent weld pool shielding and economic gas usage.

Turbulent gas flow

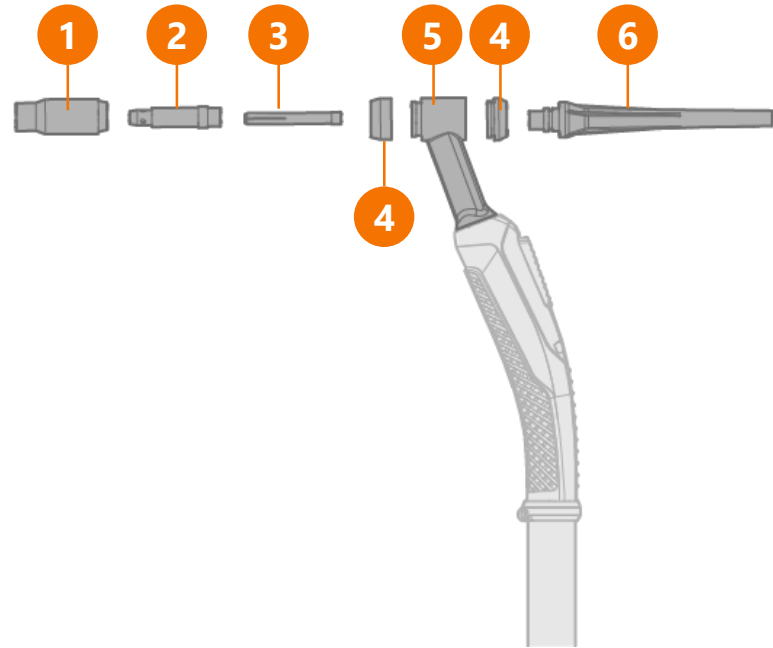


A highly turbulent flow, offering poor shielding and elevated gas consumption.

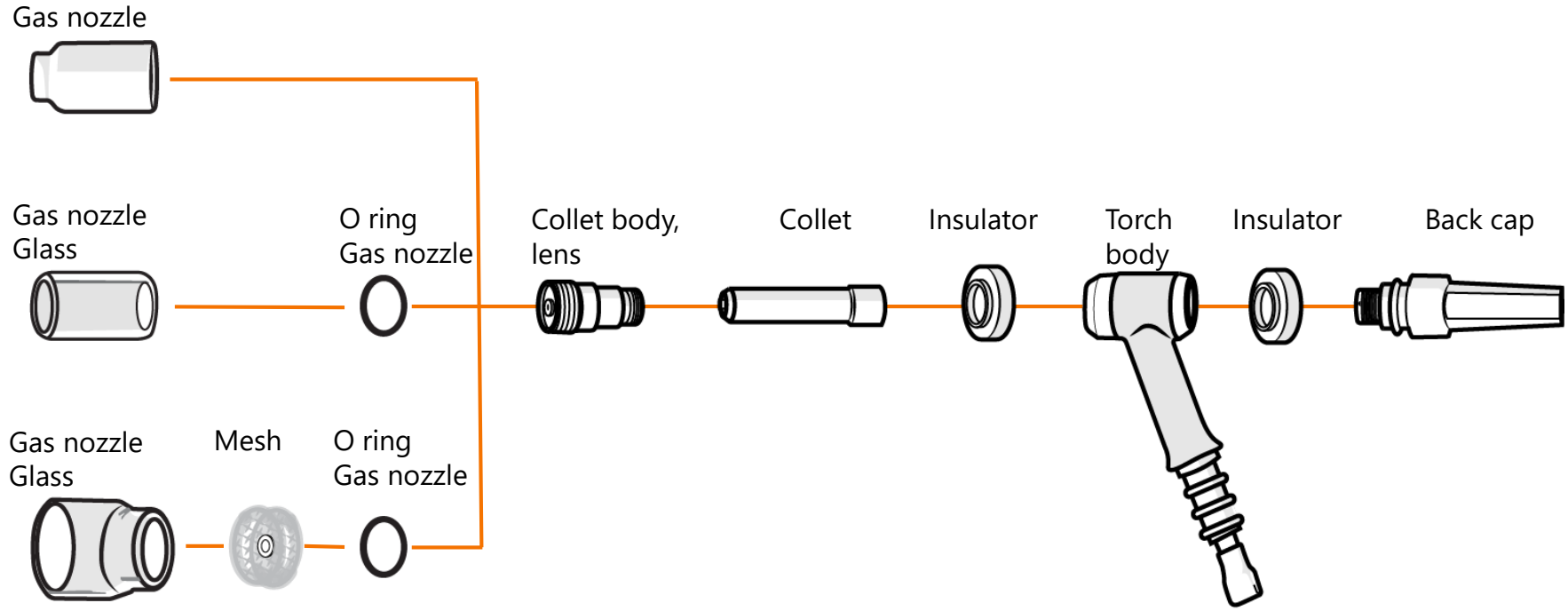


Standard consumables

1. Gas nozzle
2. Collet body
3. Collet
4. Insulating ring
5. Torch body
6. Electrode back cap



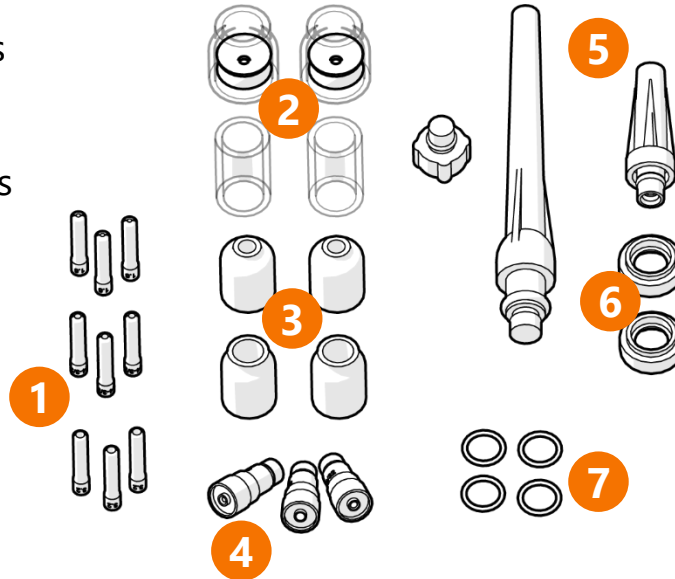
Lens consumables



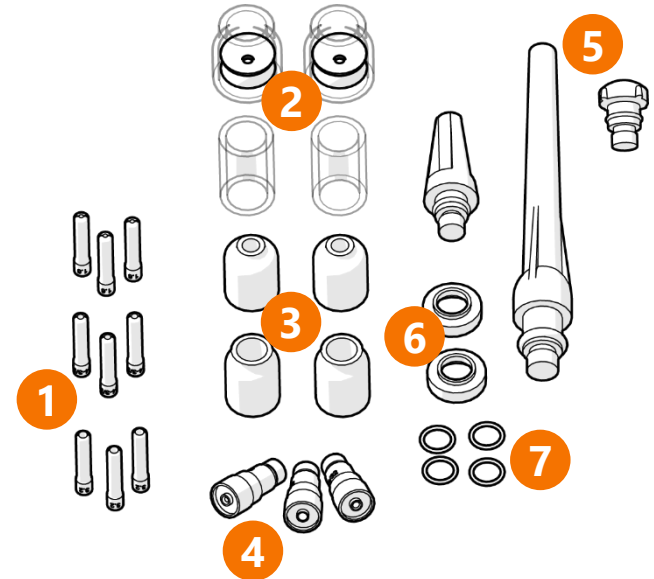
Consumable kits

1. Collets
2. Gas nozzles, glass
3. Gas nozzles, lens
4. Collet bodies, lens
5. Back caps
6. Insulators
7. O rings

PRO KIT 5/16-24 for small torch bodies



PRO KIT 3/8-32 for large torch bodies



Applications

For different industrial segments:

- Pipelines
- Pressure vessels
- Offshore
- Ship building
- Vehicle manufacturing
- Service and repair

For challenging materials:

- Stainless steels
- Duplex steels
- Heat resistance steels
- Aluminums
- Titans
- Coppers
- Nickel alloys



Applications – Case example



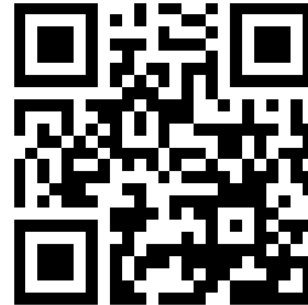


Additional details

The next slides present the technical details,
ordering information and contact information.

Technical data and ordering codes

For technical data and ordering information,
please visit [Kemppi Userdoc](#).



Contact information



And you know.

